

LATITUDE WINE BAR

Evoke International Design

WHERE VANCOUVER, BC, CANADA
OPENING MAY 2009
CLIENTS LISA HENDERSON AND LARRY NICOLAY
FLOOR AREA 117 M²
CAPACITY 46 SEATS

Perhaps it's just a coincidence that the Latitude Wine Bar opened only a few months before the start of the Vancouver Winter Olympics - in any case, during the winter both wine aficionados and Olympic fans will be happy to slip into the Latitude and out of the cold. The cosy 117-m² space has a modernist South American aesthetic that reflects the cuisine being served. Walnut panelling and sheer curtains balance a wall of sandblasted concrete block and polished concrete flooring. Raised booths provide dining privacy on one side of the interior, while a built-in bench running the length of the room on the other side welcomes larger groups. Eames moulded-plywood chairs lend a timeless, modernist vibe to the clean-lined space. Last but not least, Evoke's eye-catching, floor-to-ceiling installation - made from blocks of old-growth wood dyed in Argentine and Chilean wines - represents Latitude's realistic bid for a gold medal in design.

ABOUT EVOKE INTERNATIONAL DESIGN
David Nicolay and Robert Edmonds set up Evoke International Design in 2001. The firm's business platform incorporates conceptual thinking, architecture, interior design and graphic design. The design team's multidisciplinary approach results in coherent branded environments. With a diverse portfolio of residential, retail and entertainment-industry projects, Evoke enjoys working at various scales.
www.evoke.ca



01

01 A WALL COVERED IN INDIVIDUALLY HAND-STAINED BLOCKS OF WOOD DISPLAYS AN 'ORDERED RANDOMNESS' OF ALTERNATING GRAIN AND COLOUR.

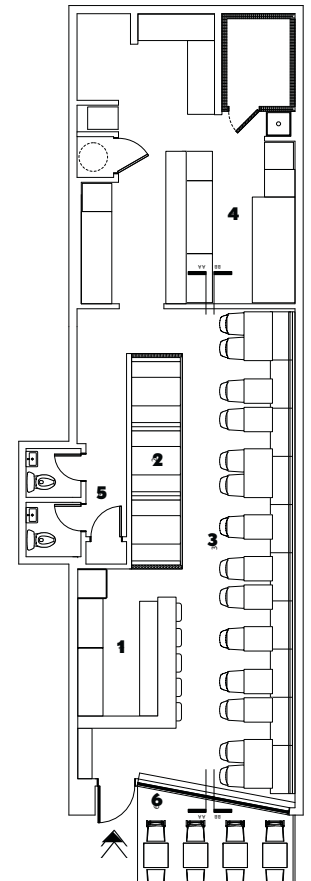
02 + 04 THE SEATING ZONE, WHICH INCLUDES THREE BOOTHS, FEATURES THE SAME WARM COLOUR SCHEME USED THROUGHOUT THE REST OF THE WINE BAR.

03 VISITORS ENTERING LATITUDE SEE A BAR MADE FROM WHITE CARRERA MARBLE, COMPLETE WITH STOOLS FOR SIX CUSTOMERS AND A BACKDROP OF 'PEEKABOO CABINETRY'.

PHOTOS JANIS NICOLAY



02



- 1 BAR
- 2 BOOTH SEATING
- 3 BENCH SEATING
- 4 KITCHEN
- 5 LAVATORIES
- 6 TERRACE



03



04